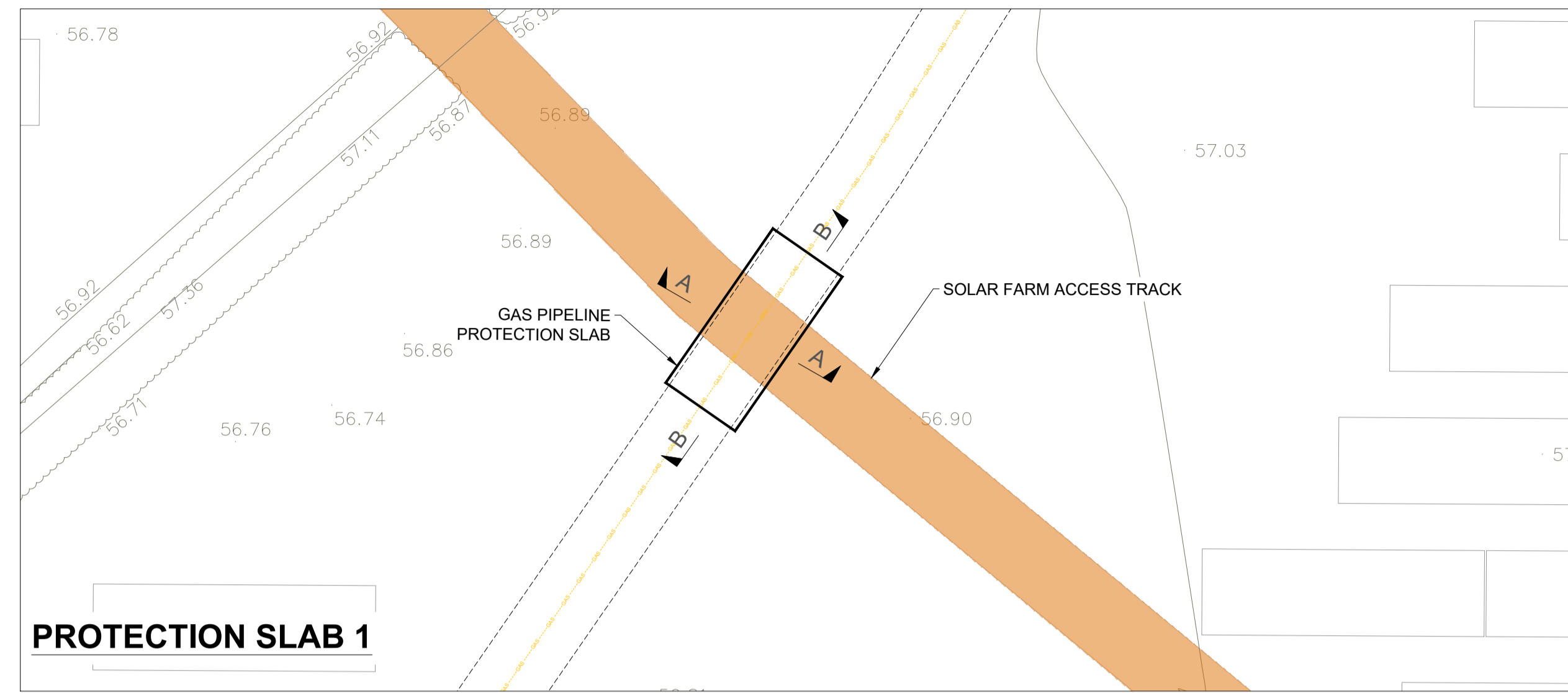
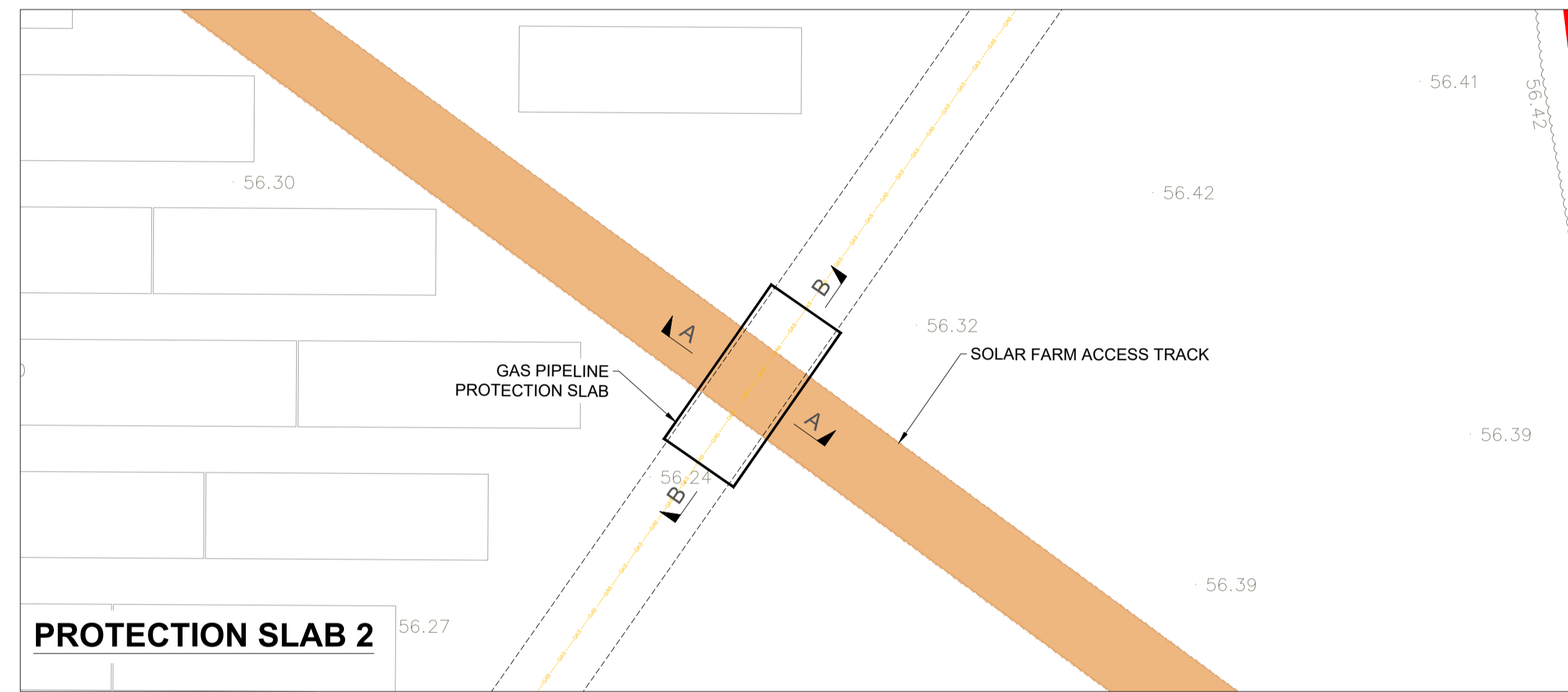


**GAS PIPELINE LOCATION**  
SCALE 1:1000

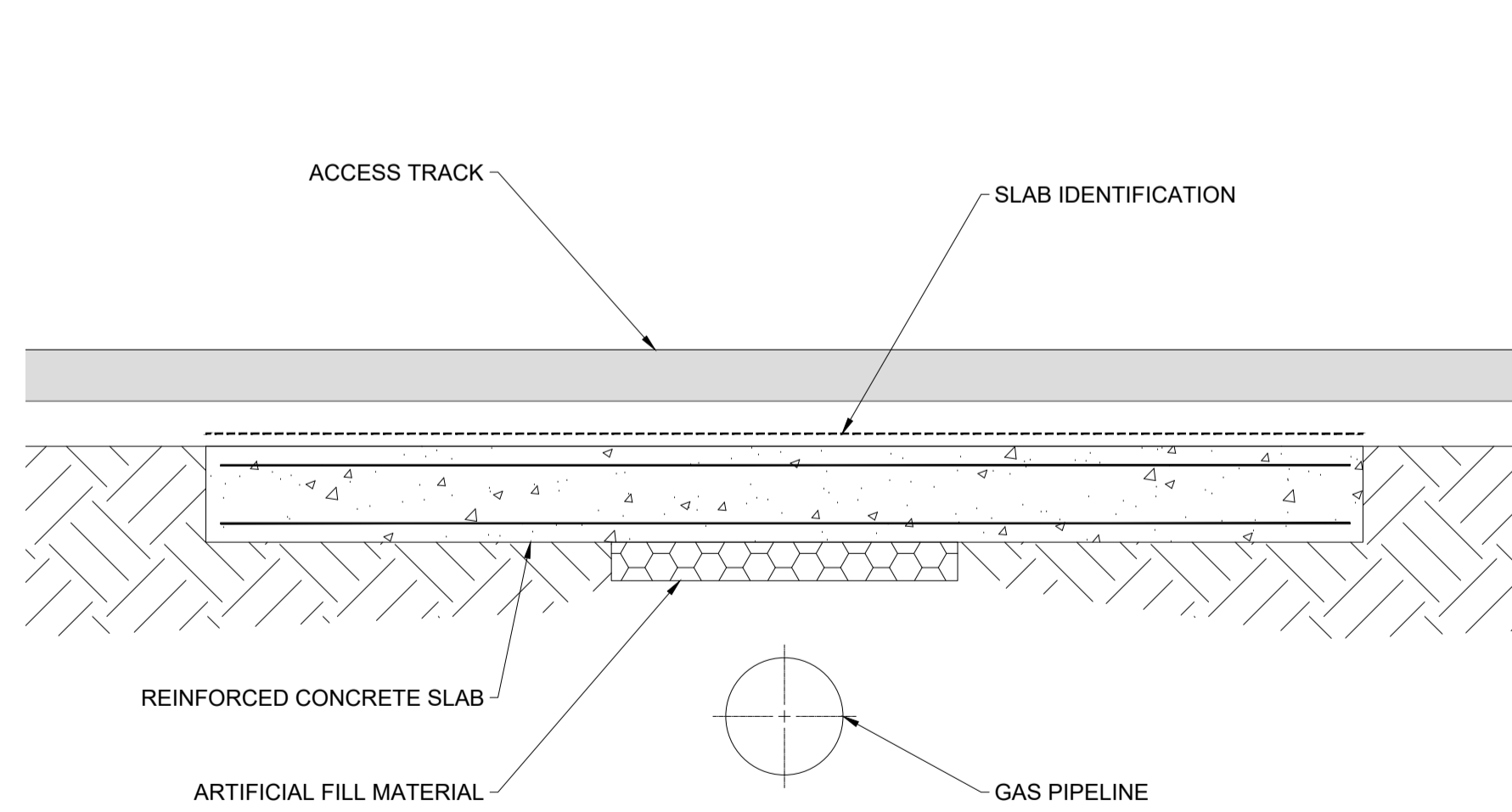


**PROTECTION SLAB 1**

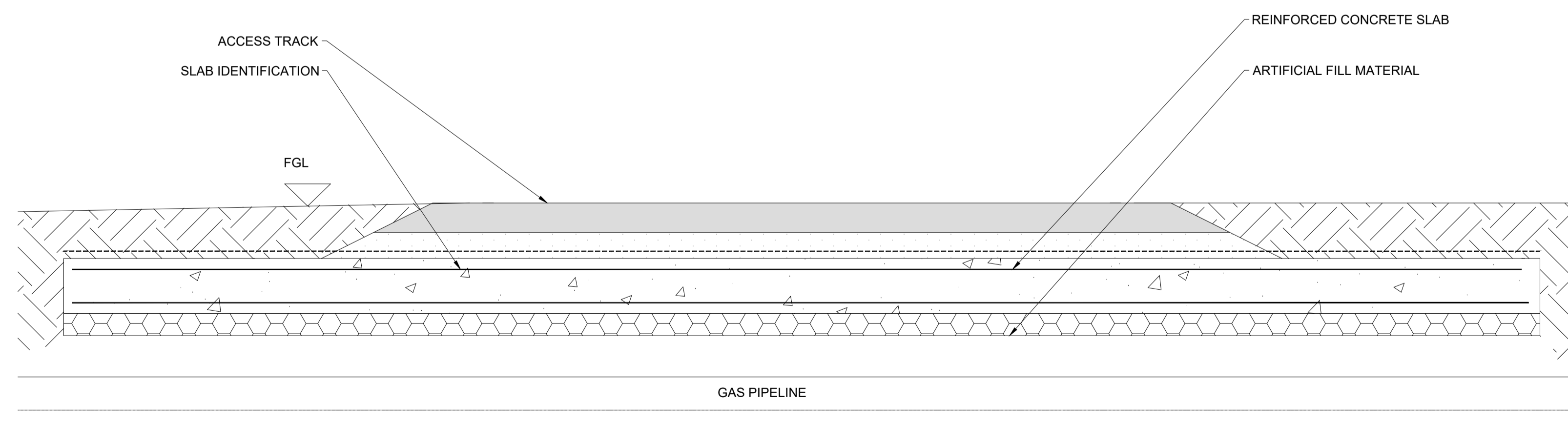


**PROTECTION SLAB 2**

**GAS PIPELINE DETAIL**  
SCALE 1:250



**SECTION A-A**  
SCALE 1:25



**SECTION B-B**  
SCALE 1:25

- NOTES:**
- DIMENSIONS IN mm UNLESS NOTED OTHERWISE.
  - THE GAS PIPE PROTECTION DESIGN SHOWN IS INDICATIVE ONLY AND SUBJECT TO CHANGE.
  - DETAIL DESIGN OF GAS PIPE PROTECTION SLAB TO BE CARRIED OUT IN ACCORDANCE WITH WWU DOCUMENTS:
    - T/PR/GM1 - PROCEDURE FOR THE PROTECTION OF PIPELINES FROM GROUND MOVEMENT AND EXTERNAL LOADING. EXTERNAL LOADING ON STEEL PIPELINES.
    - T/SP/CE/12 - SPECIFICATION FOR THE DESIGN, CONSTRUCTION AND TESTING OF CIVIL AND STRUCTURAL WORKS PART TWELVE: PIPELINE PROTECTION SLABS.



ISSUE	DRAWN	CHKD	APPD	DATE	REVISION NOTES
1	FG	VM	BD	2022-10-24	First Issue

PURPOSE	PERMITTING	COORDINATES	OSGB 1936
SCALE	AS SHOWN @ A1	DATUM	N/A
LAYOUT DWG	N/A	T-LAYOUT NO.	N/A

PROJECT TITLE	VARLEY FARM SOLAR		
DRAWING TITLE	FIGURE 14 GAS PIPE PROTECTION SLAB		
RES DRAWING NUMBER	04886-RES-UTI-DR-PT-001	REV	1